

TENDER BULLETIN

NO.26 OF 2017/18 FY

06 OCTOBER 2017



LIMPOPO

PROVINCIAL GOVERNMENT
REPUBLIC OF SOUTH AFRICA

This document is also available on the internet on the following website:

www.limtreasury.gov.za

Provincial Supply Chain Management Office

TABLE OF CONTENTS

	Page No.
1. REPORTING FRAUDULENT AND CORRUPT ACTIVITIES.....	03
2. INSTRUCTIONS.....	04
3. BID INVITATIONS FOR SUPPLIES, SERVICES AND DISPOSALS	05-08
5. ERATTUM.....	09
4. SPECIAL NOTICE.....	10
ANNEXURE 1: ADDRESS LIST AND CONTACT DETAILS: PROVINCIAL DEPARTMENTS.....	11
ANNEXURE 2: ADDRESS LIST AND CONTACT DETAILS: PUBLIC ENTITIES.....	12
ANNEXURE 3: ADDRESS LIST AND CONTACT DETAILS: PROVINCIAL TREASURY TENDER ADVISE CENTRES	13
ANNEXURE 4: ADDRESS LIST AND CONTACT DETAILS: SATELLITE OFFICES	14
8. SELF REGISTRATION PROCESS.....	15

REPORT

FRAUDULENT & CORRUPT ACTIVITIES ON GOVERNMENT PROCUREMENT SYSTEM

National Anti-Corruption @ 0800 701 701

Security and Investigating Services – Limpopo Provincial Treasury @ 015 298 7196

ALL COMPLAINTS/CONCERNS RELATED TO SCM NON-COMPLIANCE MUST BE REPORTED TO:

LIMPOPO PROVINCIAL TREASURY

PRIVATE BAG X 9486

POLOKWANE

0700

PROVINCIAL TREASURY, FINANCE HOUSE, 56 – 58 PAUL KRUGER STREET, POLOKWANE

2. INSTRUCTIONS

1. Bidders are advised to read the entire tender bulletin.
2. Tenders for procurement of supplies, services and disposals are categorized as follows:

SUPPLIES

- Accommodation, leasing of
- Audio visual equipment
- Building material
- Chemicals: Agricultural/Forestry/
- Laboratory/Water Care
- Clothing/Textiles
- Computer equipment
- Computer software
- Electrical equipment
- Electronic equipment
- Furniture
- General
- Medical
- Office equipment: Labour-saving devices
- Perishable provisions
- Stationary/printing
- Steel
- Timber
- Vehicle (all types)
- Workshop equipment

SERVICES

- Building
- Civil
- Electrical
- Functional (including cleaning-, and security services)
- General
- Maintenance of electrical, mechanical equipment and plumbing
- Mechanical
- Professional
- Repair and maintenance of vehicles
- Transport

DISPOSALS

- Clothing and textiles
- Furniture
- General
- Scrap metal
- Vehicles

3. Bid documents are generally available in English only.
4. The address where a bid document is available from and where it must be submitted to may differ.
5. The addresses at which bid documents may be obtained and to which tenders must be posted, appear in Annexure 1.
6. The address list of various Supply Chain Management Advice Centres at which bid documents and tender bulletins may also be obtained, appear in Annexure 3; and
7. The address list of Supply Chain Management satellite offices at which tender bulletins may also be obtained, appear in Annexure 4.

3. BID INVITATIONS FOR SUPPLIES, SERVICES AND DISPOSALS

BID NO.	DESCRIPTION OF SERVICE OR SUPPLIES	CONTACT DETAILS	BID DOCUMENT PRICE (NON-REFUNDABLE)	DUE AT 11H00	BID DOCUMENTS OBTAINABLE FROM	POST OR DELIVER BIDS TO
					See Annexure 1 & 2, Page 11 & 1221 145	

ACDP 17/15	<p>The construction of a 8 ha Centre Pivot non-towable irrigation system at Lebankwe farm in Molemole Local Municipality of the Capricorn District</p> <p>CIDB grading: 4CE or Higher</p> <p>COMPULSORY BRIEFING:</p> <p>Date: 19/10/2017</p> <p>Venue: Prospective tenders are requested to meet the Engineers at Lebankwe Farm is in Molemole Local Municipality of the Capricorn District approximately+ 80km North of Polokwane Town located at the following GPS coordinates S23°31'10"; E29°56'45.9".</p> <p>Time: 10H00</p> <p>Department of Agriculture</p>	<p>ADMINISTRATION PROCESS</p> <p>Me. NM Mononyane @ 015 294 3434 or Email at mononyanenm@agric.limpopo.gov.za</p> <p>TECHNICAL ASPECTS</p> <p>Mr. M Maripa @ 015 632 8616 or 071 868 1787 or Email at maripam@agric.limpopo.gov.za</p>	R170-00	07/11/2017	111	111
---------------	---	--	---------	------------	-----	-----

LIMPOPO PROVINCIAL TENDER BULLETIN NO 26 OF 2017/18 FY, 06 OCTOBER 2017

<p>ACDP 17/16</p>	<p>The construction of a 20 ha Centre Pivot (towable) irrigation system at Steadyrain Farm in Polokwane Local Municipality of the Capricorn District</p> <p>CIDB grading:4CE or Higher</p> <p>COMPULSORY BRIEFING:</p> <p>Date: 18/10/2017 Venue: Steadyrain Farm in Ga-Semenya Village. Directions to the farm are as follows: Steadyrain Farm is in Polokwane Municipality of the Capricorn District, approximately 25km North of Polokwane town. The approximate GPS coordinates of the farm are as follows: 23° 40'17"S ,29°24'15"E</p> <p>Time: 10H00</p> <p>Department of Agriculture</p>	<p>ADMINISTRATION PROCESS Me. NM Mononyane @ 015 294 3434 or Email at mononyanenm@agric.limpopo.gov.za</p> <p>TECHNICAL ASPECTS Mr. M Maripa @ 015 632 8616 or 071 868 1787 or Email at @agric.maripam.limpopo.gov.za</p>	<p>R170-00</p>	<p>07/11/2017</p>	<p>111</p>	<p>111</p>
<p>ACDP 17/27</p>	<p>Manufacture, supply, delivery, installation, test and commissioning of packing equipment at Masalal pack house situated at Masala 722LT in the Baphalaborwa Municipality of Mopani District in Limpopo Province</p> <p>CIDB grading: 3CE or Higher</p> <p>COMPULSORY BRIEFING:</p> <p>Date: 17/10/2017 Venue: Bidding tenderers are requested to meet the Engineer at the Masalal Packing facility with coordinates: S23°42'01.20"; E30°47'16.93". Direction to Masalal are as follows: Travel on the Eiland road from Litsitele towards the Selwane Village via the Hans Merensky Nature Reserve, pass Prisca Village and travel +/- 6km, look out for a name board written</p>	<p>ADMINISTRATION PROCESS S Matodzi @ 015 294 3351 or Email at matodzis@agric.limpopo.gov.za</p> <p>TECHNICAL ASPECTS Mr. MS Monyepao @ 015 294 3404/ 074 582 5711 or By Email at monyepaos@agric.limpopo.gov.za</p> <p>Mr. S Mabye @ 015 812 3210 or 079 041 0223</p>	<p>R170-00</p>	<p>07/11/2017</p>	<p>111</p>	<p>111</p>

LIMPOPO PROVINCIAL TENDER BULLETIN NO 26 OF 2017/18 FY, 06 OCTOBER 2017

	<p>Masalal pachhuis on the left</p> <p>Time: 10H00</p> <p>Department of Agriculture</p>					
ACDP 17/28	<p>The Development and construction of a 7 ha Centre towable Centre Pivot at Nkugeng Farm in Molemole Local Municipality under Capricorn District</p> <p>CIDB grading: 3CE or Higher</p> <p>COMPULSORY BRIEFING:</p> <p>Date: 20/10/2017 Venue: Prospective tenderers are requested to meet the Engineer at Nkugeng Farm in Molemole. Directions to the farm are as follows: The project is located in Senwabarwana next to Mohodi Village, approximately 10km Dendron Garage on the R521 on the right hand side. The approximate GPS coordinates of the farm are as follows: 23° 20'31.91" S, 29°15'18.32"E. Time: 10H00</p> <p>Department of Agriculture</p>	<p>ADMINISTRATION PROCESS S Matodzi @ 015 294 3351 or Email at matodzis@agric.limpopo.gov.za</p> <p>TECHNICAL ASPECTS Mr.MF Monyepao @ 015 632 8615/ 071 3118956 or Email at fransmonyeps@gmail.com</p>	R170-00	09/11/2017	111	111
ACDP 17/29	<p>The development of 20ha irrigation scheme and refurbishment of an existing Centre Pivot at Tlou Farm in Polokwane Local Municipality under Capricorn district</p> <p>CIDB grading:4CE or Higher</p> <p>COMPULSORY BRIEFING:</p> <p>Date: 16/10/2017 Venue: Prospective tenderers are requested to meet the Engineer at the Tlou Farm in Polokwane. Directions to the farm are as follows: Tlou Project is in located in the Polokwane Municipality of the Capricorn</p>	<p>ADMINISTRATION PROCESS S Matodzi @ 015 294 3351 or Email at matodzis@agric.limpopo.gov.za</p> <p>TECHNICAL ASPECTS Mr.MF Monyepao @ 015 632 8615/ 071 3118956 or Email at fransmonyeps@gmail.com</p>	R170-00	09/11/2017	111	111

LIMPOPO PROVINCIAL TENDER BULLETIN NO 26 OF 2017/18 FY, 06 OCTOBER 2017

	District, approximately 10 km north of Polokwane town. 23°49'07.0" S, 29°26'19.9" E. Time: 10H00 Department of Agriculture					
LPT 001/20 17	Assessment Study on Personnel Management Practices and Costs in the social and economic sector departments in Limpopo with the objective of determining a strategy. Department of Limpopo Provincial Treasury	ADMINISTRATION PROCESS Mr. Maphanga T.H @ 015-2987055 TECHNICAL ASPECTS Ms. Semenya P @ 015 298 7000 and	R80-00	27/10/2017	101	101
EDET 230/20 17	Revision of the Limpopo Tourism growth strategy Economic development, environment & tourism	ADMINISTRATION PROCESS Ramoraswi F.F @ 015 293 8759 or Mothutsi Linda @ 015 293 8766 TECHNICAL ASPECTS Ngobeni Moses @ 015 293 8554 or 082 800 2666	R80-00	01/11/2017	109	109

4. ERRATUM

DEPARTMENT OF SOCIAL DEVELOPMENT

CHANGE OF VENUE IN RESPECT OF BID: DSDP42/1: PROVISION OF ACCOMMODATION AND MEALS FOR TWO HUNDRED (200) PEOPLE DURING NATIONAL GOLDEN GAMES IN KWAZULU NATAL PROVINCE FROM 22nd TO 28th OCTOBER 2017

THE VENUE HAS BEEN CHANGED FROM PORT SHEPSTONE TO DURBAN WITH THE SAME TERMS AND CONDITIONS OF THE INITIAL SPECIFICATION, AS SUCH BIDDERS ARE EXPECTED BASE THEIR QUOTES IN TERMS OF A NEW VENUE WHICH IS IN DURBAN

5. SPECIAL NOTICES

5.1 DEPARTMENT OF LIMPOPO PROVINCIAL TREASURY

(SCM Advice Centers): LIMPOPO PROVINCIAL TREASURY
ADVERTISEMENTS OF LIMPOPO CSD CALL CENTRE LINES FOR SUPPLIERS IN THE TENDER BULLETIN:-

LIMPOPO CSD CALL CENTRE LINES FOR SUPPLIERS

DISTRICT	CALL CENTRE NUMBER	OFFICIAL RESPONSBLE	TIME
Head Office	015 291 2684	Mr.Muthivhi MC	07H30 TO 16H30
Mopani	015 812 0256	Ms. Nxumalo P	07H30 TO 16H30
Sekhukhune	013 265 1071	Mrs Morena MM	07H30 TO 16H30
Vhembe	015 962 0014	Mrs. Nefolovhodwe MQ	07H30 TO 16H30
Waterberg	014 717 1376	Mrs. Tsatsi AT	07H30 TO 16H30

LIMPOPO PROVINCIAL TENDER BULLETIN NO 26 OF 2017/18 FY, 06 OCTOBER 2017

ANNEXURE 1: ADDRESS LIST AND CONTACT DETAILS: LIMPOPO PROVINCIAL DEPARTMENTS

UNIQUE REF. NO.	BID DOCUMENT REFERENCE	CONTACT DETAILS	DOCUMENTS SOLD AT:	DOCUMENTS DEPOSITED AT
100	DSDP	Tel: 015 293 6000 Fax: 015 293 6211 Website: www.limpopo.gov.za	Department of Social Development , Office No. 57 Ground Floor, 21 Biccard Street POLOKWANE	Deposited in the box located at Department of Social Development, 21 Biccard Street Polokwane
101	LPT	Tel: 015 298 7000 Fax: 015 295 7010 Website: www.limpopo.gov.za	Provincial Treasury 46 Hans Van Rensburg Street, POLOKWANE and all Provincial Treasury Tender Advice Centres	Deposited in the bid box located outside a guard house at Ismini Towers, 46 Hans Van Rensburg Street, Polokwane
101A	TC/LP	Tel: 015 291 8400 Fax: 015 295 3310 Website: www.limpopo.gov.za	Provincial Treasury 56 – 58 Paul Kruger Street, POLOKWANE and all Provincial Treasury Tender Advice Centres	Deposited in the bid box located in the main entrance, Finance House Building, 56-58 Paul Kruger Street, Polokwane
102	PRDP	Tel: 015 287 6000 Fax: 015 295 3840 Website: www.limpopo.gov.za	Office of the Premier , 40 Hans van Rensburg Street, POLOKWANE and all SCM Advice Centres	Deposited in the bid box located at Mowaneng Building, 40 Hans van Rensburg Street, Polokwane
103	HEDP	Tel: 015 293 6000 Fax: 015 293 6211 Website: www.limpopo.gov.za	Department of Health , Office No. D3 Ground Floor, Old Capricorn Building, 18 College Street, POLOKWANE and all Provincial Treasury Tender Advice Centres	Deposited in the box located at Department of Health and Social Development, 18 College Street, Polokwane
104	LPEDT	Tel: 015 290 7600/1 Fax: 015 297 4494 Website: www.limpopo.gov.za	Department of Education , Corner 113 Biccard and 24 Excelsior Streets, POLOKWANE and all Provincial Treasury Tender Advice Centres	Deposited in the bid box located in the main entrance of corner 113 Biccard Street and Excelsior Street, Polokwane
105	PUDP	Tel: 015 295 1000 Fax: 015 295 1163 Website: www.limpopo.gov.za	Department of Roads & Transport , 40 Paul Kruger Street, POLOKWANE and all Provincial Treasury Tender Advice Centres	Deposited in the bid box located at 1 st Floor, Paul Kruger Wing, 40 Paul Kruger Street, Polokwane
106	DSSL	Tel: 015 290 2900 Fax: 015 291 4452 Website: www.limpopo.gov.za	Department of Safety, Security and Liaison , 32 Schoeman Street, POLOKWANE and all Provincial Treasury Tender Advice Centres	Deposited in the bid box located in the main entrance of 32 Schoeman Street, Polokwane
107	COGHSTA	Tel: 015 294 2000 Fax: 015 295 4190 Website: www.limpopo.gov.za	Department of Co-Operative Governance, Human Settlements & Traditional Affairs , 28 Market Street, Office No. G 74, Ground Floor, Polokwane.	Deposited in the bid box located at Hensa Towers, Cnr of Rabe and Landdros Mare Streets, Polokwane
108	DSAC	Tel: 015 284 4000 Fax: 015 284 4514 Website: www.limpopo.gov.za	Department of Sport, Arts and Culture Olympic Towers, Corner Rabe and Biccard Street, POLOKWANE and all Provincial Treasury Tender Advice Centre	Deposited in the bid box located in the main entrance of Olympic Towers, Corner 21 Rabe and Biccard Street, Polokwane
109	LEDET	Tel: 015 293 8300 Fax: 015 293 8319 Website: www.limpopo.gov.za	Department of Economic Development, Environment & Tourism , 90 Bok Street, POLOKWANE and all SCM Advice Centres	Deposited in the bid box located in the main entrance of Evridiki Towers, 19 Biccard Street, Polokwane
110	LDPW & WODP	Tel: 015 284 7000 Fax: 015 284 7031 Website: www.limpopo.gov.za	Department of Public Works, Roads and Infrastructure ; Towers, 43 Church Street, POLOKWANE and all Provincial Treasury Tender Advice Centres	Deposited in the bid box located at Corner Blaawberg and River Street Ladanna Polokwane 0699 Private Bag X9490 Polokwane 0700
111	ACDP	Tel: 015 294 3000/30/60/90/20 Fax: 015 294 4506 Website: www.limpopo.gov.za	Department of Agriculture , Temo Towers, 69 Biccard Street, POLOKWANE and all Provincial Treasury Tender Advice Centres	Deposited in the bid box located in the main entrance of AgriVillage, 69 Biccard Street, Polokwane

LIMPOPO PROVINCIAL TENDER BULLETIN NO 26 OF 2017/18 FY, 06 OCTOBER 2017

ANNEXURE 2: ADDRESS LIST AND CONTACT DETAILS: LIMPOPO PUBLIC ENTITIES

UNIQUE REF. NO.	BID DOCUMENT REFERENCE	CONTACT DETAILS	DOCUMENTS SOLD AT:	DOCUMENTS DEPOSITED AT
112	RFB: LIMP	Tel: 015 293 3621 Fax: 015 293 3660 Website: www.golimpopo.co	State Information Technology Agency (SITA) Limpopo Office, Moolman Building, 27 Market Street, POLOKWANE, 0699	Bid box located in the Main Entrance of Moolman Building, 27 Market Street, Polokwane
113	LTA	Tel: 015 293 3600 Fax: 015 293 3655 Website: www.golimpopo.com	Limpopo Tourism Agency , ERF 92/688, Portion 2 Southern Gateway, Ext 4, N1 Main Road, Polokwane 0699	Bid box located in the offices ERF 92/688, Portion 2 Southern Gateway, Ext 4, N1 Main Road, Polokwane 0699
114	LGB	Tel: 015 295 5581 Fax: 015 295 3566 Website: www.lgb.org	Limpopo Gambling Board , 22 Schoeman Street, POLOKWANE, from 08H30 to 16H00	Bid box located in the main entrance, ground floor, 22 Schoeman Street, Polokwane
115	LEDA	Tel: 015 633 4700 Fax: 015 633 4854 Website: www.leda.co.za	Limpopo Economic Development Agency Enterprise Development Finance, Main Road Lebowakgomo	Bid box located in the main entrance, Enterprise Development Finance, Main Road Lebowakgomo
116	RAL	Tel: 015 284 4600 Fax: 015 284 4701 Website: www.ral.co.za	Road Agency Limpopo (RAL) , RAL Towers, 26 Rabe Street, POLOKWANE, 0700	Bid box located in the entrance foyer (ground floor) of RAL Towers, at 26 Rabe Street, Polokwane
117	GAAL	Tel: 015 288 0122 Fax: 015 288 0346 Website: www.gaal.co.za	Gateway Airports Authority Limited , N1 Road to Louis Trichardt, Army Base, POLOKWANE International Airport, Polokwane, 0700	Bid box located in the main entrance, ground floor of administration building, Polokwane International Airport, Army Base
118	VIVET	Tel: 015 963 3156 Fax: 015 963 3154 Website: www.fetcol@mweb.co.za	Vhembe FET College , Stand No. 203, Unit A, Sibasa, 0970, Limpopo Province	Vhembe Fet College, Central Office, Private Bag X2136, SIBASA 0970
119	WTVET	Tel: 015 491 8581/8602 Fax: 015 491 8579 Website: www.procurement@waterbergcollege.co.za	Waterberg FET College , Central Office, 36 Hooge Street Street, Mokopane, 0600	Waterberg FET College , Central Office, 36 Hooge Street Street, Mokopane, Private Bag x 2449, Mokopane 0600

LIMPOPO PROVINCIAL TENDER BULLETIN NO 26 OF 2017/18 FY, 06 OCTOBER 2017

ANNEXURE 3: ADDRESS LIST AND CONTACT DETAILS: PROVINCIAL TREASURY TENDER ADVICE CENTRES

(Tender bulletins and bid documents are obtainable from the following Centers):

PROVINCIAL TREASURY SUPPLY CHAIN MANAGEMENT ADVICE CENTRES	
<p>HEAD OFFICE</p> <p>Provincial Supply Chain Management Office 56 – 58 Paul Kruger Street POLOKWANE Private Bag x9494 POLOKWANE, 0700 Tel No. (015) 291 8400</p> <p>Contact: Ms. M.BRakubu @ Tel: 015 291 8717/6</p>	<p>Capricorn SCM Advice Centre</p> <p>Limpopo Provincial Treasury 56-58 Paul Kruger Street Private Bag x9494 POLOKWANE, 0700 Tel No. (015) 291 8400</p> <p>Contact Person: Ms. M.M. Masindi</p>
<p>Vhembe SCM Advice Centre</p> <p>Limpopo Provincial Treasury Government Building Complex BLOCK E GROUND FLOOR THOHOYANDOU, VENDA Tel: (015) 962 1752 Fax: (015) 962 1282</p> <p>Contact Person: Ms. A Manena</p>	<p>Mopani SCM Advice Centre</p> <p>Limpopo Provincial Treasury Private Bag X 1973 GIYANI, 0826 Tel: (015) 812 0149 Fax: 086 219 7905</p> <p>Contact Person: Mr. M. B. Mbedzi</p>
<p>Waterberg SCM Advice Centre</p> <p>Limpopo Provincial Treasury 98 Nelson Mandela Street Decimale Building MODIMOLLE Tel: (014) 717 5837 Fax: (014) 717 5670</p> <p>Contact Person: Mr. P.E. Mogoroga</p>	<p>Sekhukhune SCM Advice Centre</p> <p>Limpopo Provincial Treasury Lefa Centre, Schoonoord Road JANE FURSE Tel: (013) 265 1344 Fax: (013) 265 1354</p> <p>Contact Person: Mr. M. S. Sehale</p>

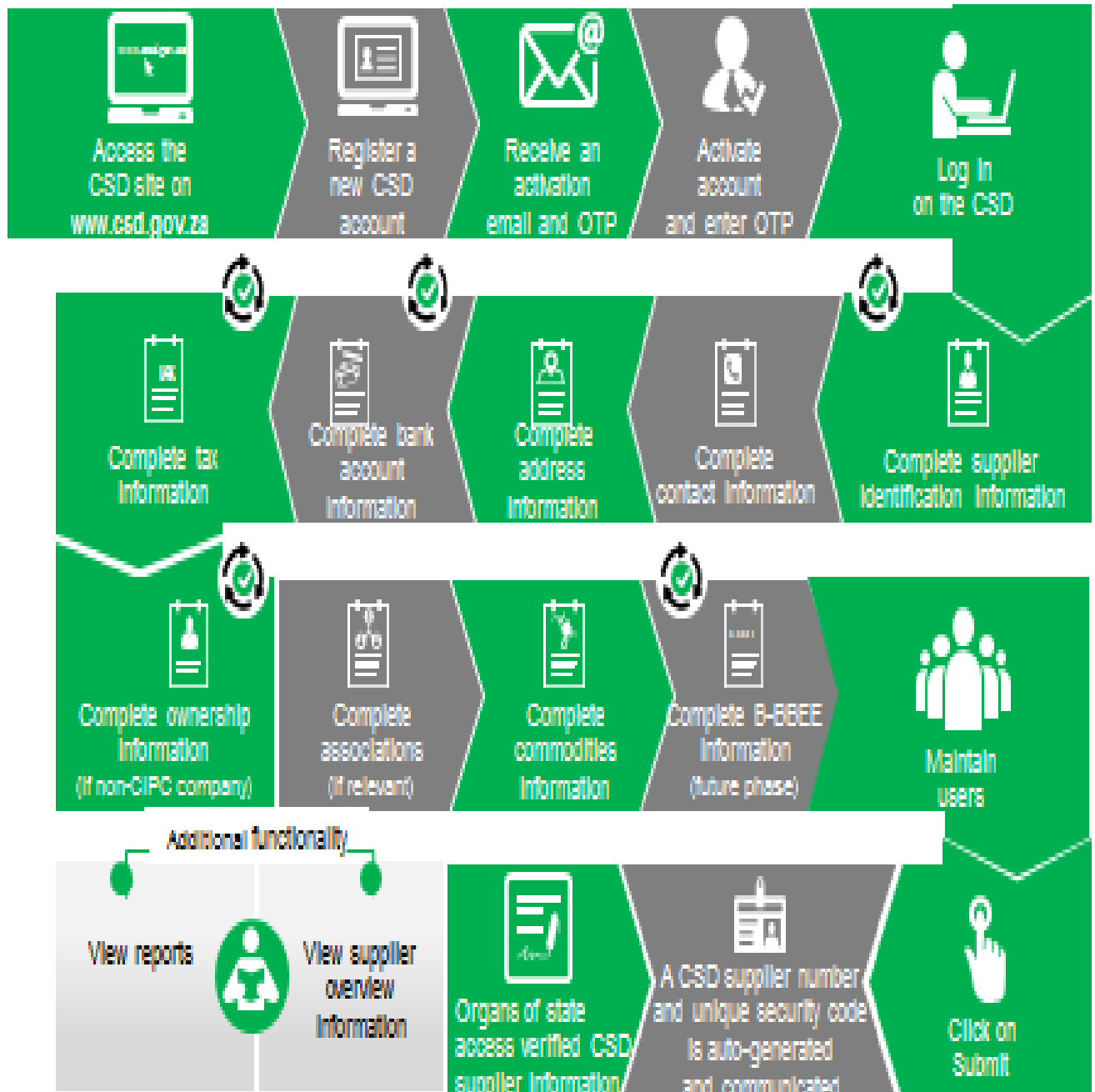
LIMPOPO PROVINCIAL TENDER BULLETIN NO 26 OF 2017/18 FY, 06 OCTOBER 2017

ANNEXURE 4: ADDRESS LIST AND CONTACT DETAILS: SATELLITE OFFICES

(Tender bulletins are obtainable from the following centers)

CAPRICORN	VHEMBE	MOPANI	WATERBERG	SEKHUKHUNE
			Libsa Thabazimbi: No.08 Riet Bok Street Tel. No. (014) 772 2437	
			Libsa Lephalale No. 3A Venter Street Tel. No. (014) 763 2834	

Supplier Self-Registration Process



Auto verification of supplier information with SARS, GIPC etc